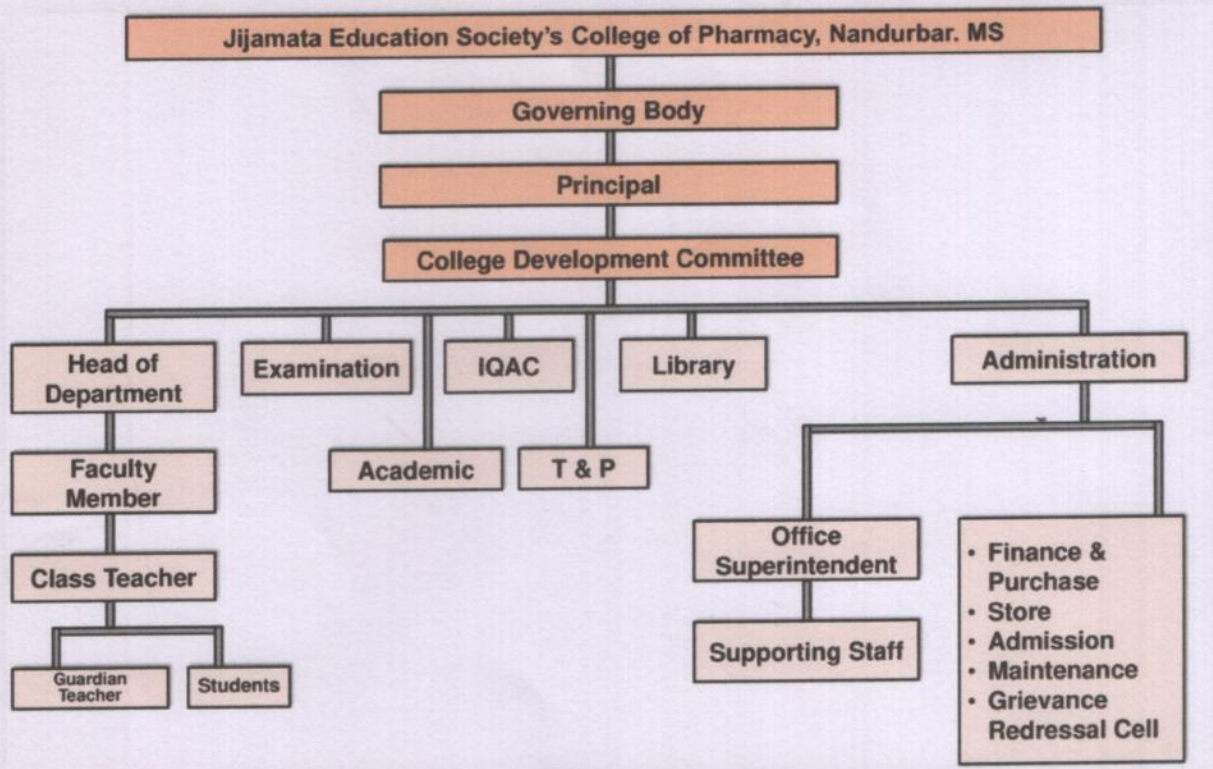


**Jijamata Education Society's College of
Pharmacy, Nandurbar. MS 425412**

**Affiliated to
Kavayitri Bahinabai Chaudhari North Maharashtra
University, Jalgaon**

ORGANOGRAM AND ADMINISTRATIVE





Administrative Setup

As per guidelines issued from trust monitoring and administrative structure being set as follows. Jijamata Education Society's College of Pharmacy is run by the organizations of act as a representative of the management

- Jijamata Education Society's College of Pharmacy is run by the organization of Jijamata Education Society
- The Secretary and Principal have the power related to finance academic and administration matter
- IQAC and college development committee formed as per the Maharashtra Public University act 2016 frame policies related to development and functioning of institute
- Each department has a head who will assign various task to different members of faculty
- Over all faculty and non teaching works according to guidelines and directive provides by the IQAC, CDC various working committees and different stakes of the college



Rand
PRINCIPAL
 Jijamata Education Society's
 College of Pharmacy
 Waghoda Road, Nandurbar